

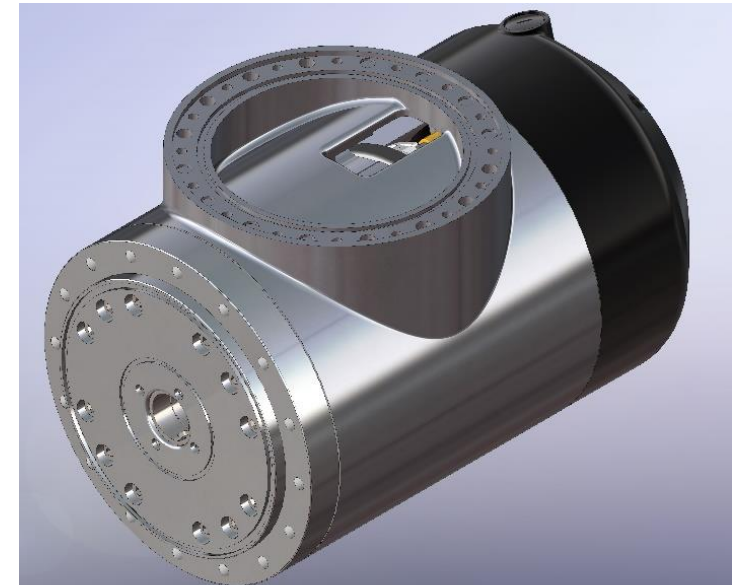
Technical Datasheet J-Actuator J40-LP

J-Actuator is a rotary actuator with EtherCAT embedded motor control electronic board. It is composed by:

- 48V torque motor
- Harmonic gearbox
- Stationary brake
- Absolute encoder on motor axis or on both gearbox axes (optional)

It is available with different gear ratios and motor windings to customize the actuator according to the application requirements in terms of output torque, speed and power consumption.

The design of the J-Actuator is mainly developed in particular for robotic joints, but it could be used also as a rotary actuator with a very high density of torque capability. For a deep custom integration, it is available in the “naked” version without the external Aluminum alloy



Motor&Gear Specs		Mechanical Specs**		Electronics&Control Specs	
Ratio available	81-101-121-161	Permissible dynamic tilting moment [Nm]	722	Encoder	Absolute 20 bit + 16 bit multiturn
Rated motor speed [rpm]	1500	Permissible axial load [N]	7863	Stationary brake	Clutch
Max motor speed [rpm]	2500	Permissible radial load [N]	5268	Voltage [V]	48
Power	470	Weight [kg]	17	Fieldbus	EtherCAT - CiA 402
Rated Torque [Nm]	235 to 467*	Hollow shaft diameter [mm]	24	Electronic motor control board Safety Function	STO/SBC according to SIL 3, Pl e
Peak Torque [Nm]	675 to 841*	Operating Temperature [°C]	0-45		
*depending from gear ratio **referred to complete version with encoders on both gearbox axes and with external aluminum alloy chassis		Humidity			Max 90% non condensing

Technical Datasheet J-Actuator J40-LP

Complete version overall dimension and mounting:

